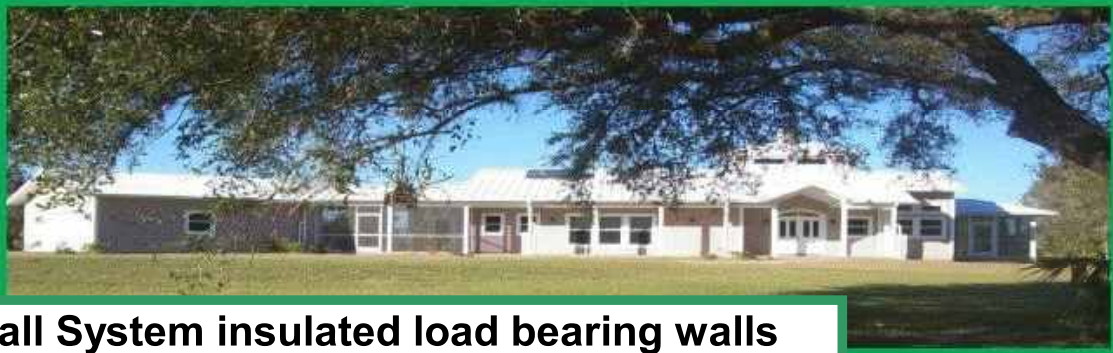


# "As Seen on HGTV"

## Ultra Green Home



All Wall System insulated load bearing walls



## 650' Creekfront - 9 Acres

**AW**™  
**ALLWALL**  
**S Y S T E M**

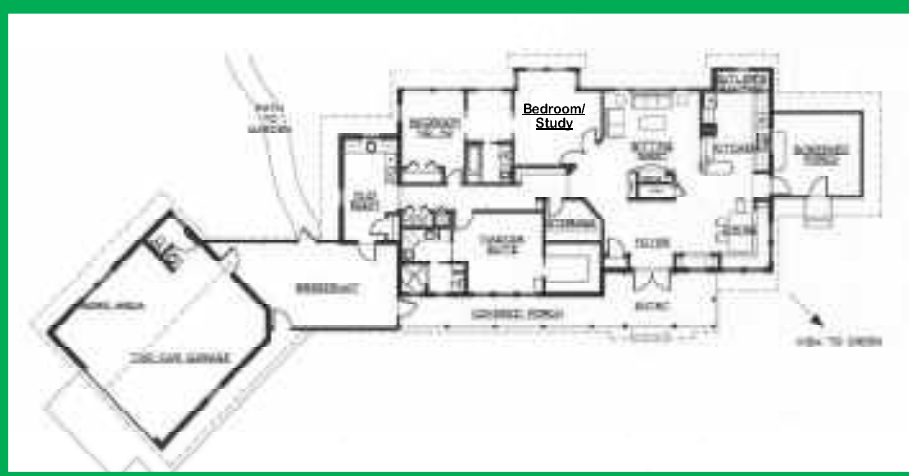
[www.AllWallSystem.com](http://www.AllWallSystem.com)

(954) 325-7578

## The Home With a Story...

Stan and Colette Corwin conceived their home consistent with their goal to live lightly on the earth (see *Pioneer Spirit* by Carrie Alexander, Orlando Sentinel 2/22/04), intending it to be their lasting abode. Cost considerations were secondary to quality, sustainability, the cleanest air and purest water, and desired lifestyle. Life has now led them in a new direction, resulting in the offering of their nothing-spared home well below replacement cost.

Initially, the nine-acre creek front property's physical and environmental attributes were assessed (Resource Management Group report, 3/25/02) to best utilize and simultaneously preserve the quality natural aspects of the land and the adjoining creek. Architect Rob Andrys was commissioned to create a big house in a small footprint (open plan, interior sunlight bathing via cupola and light tubes, long diagonal views), with prime emphasis on conservation of and efficient use of energy and water (see *Sustainable Designs (Corwin)* at [www.andrys.org](http://www.andrys.org)). The result is summarized in **A case study in efficiency, durability and comfort** at [www.allwallsystem.com](http://www.allwallsystem.com), and in the following paragraphs.



## Home Features

- Three bedroom, 2 1/2 baths
- 2,300 sf under air, 4,658 sf total
- Two car garage with shop area
- Central Heatilator fireplace with blowers
- Copula skylight supplemented with light tubes
- Ceiling fans throughout
- Extensive custom millwork and cabinetry
- Oriented for creek view, minimal heat gain, and benefit from prevailing summer breezes
- Rainwater harvesting, 10,000 gallon storage, and well backup that is rarely used per owner.
- Whole-house 25KW generator with auto-switchover
- Propane power for fireplace, cook top, water heater backup, and clothes dryer connection.
- Roof solar panel heats water.
- Astoundingly low energy costs



Chart from **A case study in efficiency, durability and comfort** posted at [www.allwallsystem.com](http://www.allwallsystem.com)

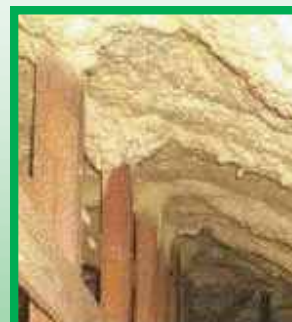




## ***The Rest of the Story...***

Behind the scenes in the house are the following:

- Icynene sprayed foam insulation ([www.Icynene.com](http://www.Icynene.com)) directly under the roof (both house and garage), providing a cooler attic space in summer and reducing cooling costs.
- Windows are hurricane resistant glass, energy efficient Low-E.
- Exterior walls are ALLWALL construction ([www.allwallsystem.com](http://www.allwallsystem.com)), comprised of steel, concrete, and insulating Styrofoam. Metal studs are used in the interior walls.
- Exterior siding is Hardy Plank, a cement and fiber composite.
- Complete water conditioning: Ozonator, charcoal filter, and PH balancer. Drinking water goes through a reverse-osmosis purifier.
- Well backup to the rainwater harvesting system. Well water is processed through its own reverse osmosis system prior to entering the underground storage tank.
- Freus 19+ Seer water-cooled quiet air conditioner ([www.freus.com](http://www.freus.com)).
- Z-Coil whole-house dehumidification by Heat Pump Technology ([www.heatpipe.com](http://www.heatpipe.com)) adding comfort and a/c efficiency.
- Honeywell electronic air cleaner.
- ProgressiveTube solar heater ([www.tctsolar.com](http://www.tctsolar.com)) preheats water to the propane water heater/tank.
- Metlund on-demand hot water recirculation system ([www.gothotwater.com](http://www.gothotwater.com)) saves energy and water.
- Sustainable Marmoleum flooring ([www.forbolinoleumna.com](http://www.forbolinoleumna.com)) in kitchen, hall, bath and laundry. Carpeting is manufactured from recycled soda bottles, with underlying pad of natural fibers.
- Cabinetry, millwork and walls are finished with zero VOC products except for two small wall areas where higher humidity dictated use of a very low VOC product.



Spray Foam Insulation

